



Bury Road, Chingford, E4

BUTLER  STAG



SALE AGREED, HOMES OF A SIMILAR CALIBRE ALWAYS REQUIRED FOR PROFFESIONAL FAMILIES
 beautifully appointed, five double bedroom, detached family home located on highly sought after Bury Road.



Freehold

- Detached Family House
- Gated Secure Entrance/ Plus Garaging
- Prime Sewardstonebury Location
- Heated Swimming Pool
- Five Bedrooms/ Four Bathrooms
- Over 4000 Sq Ft
- South/ West Facing Garden
- Chain Free

Hilltop is a detached, five double bedroom, four bathroom detached family home that is located on one of the most prestigious turnings in the hamlet of Sewardstonebury, North Chingford.

Available on a chain free basis, this versatile property is perfectly laid out to suite busy family life as well as having the flexibility to support a small work from home team.

Set behind electrically operated gates, this imposing home makes a striking impression with its 1920's facade that hides an entirely up to date and functional living accommodation.

On entering, your eye is immediately drawn the entire length of the property with views through a glazed conservatory area out to the landscaped rear garden.

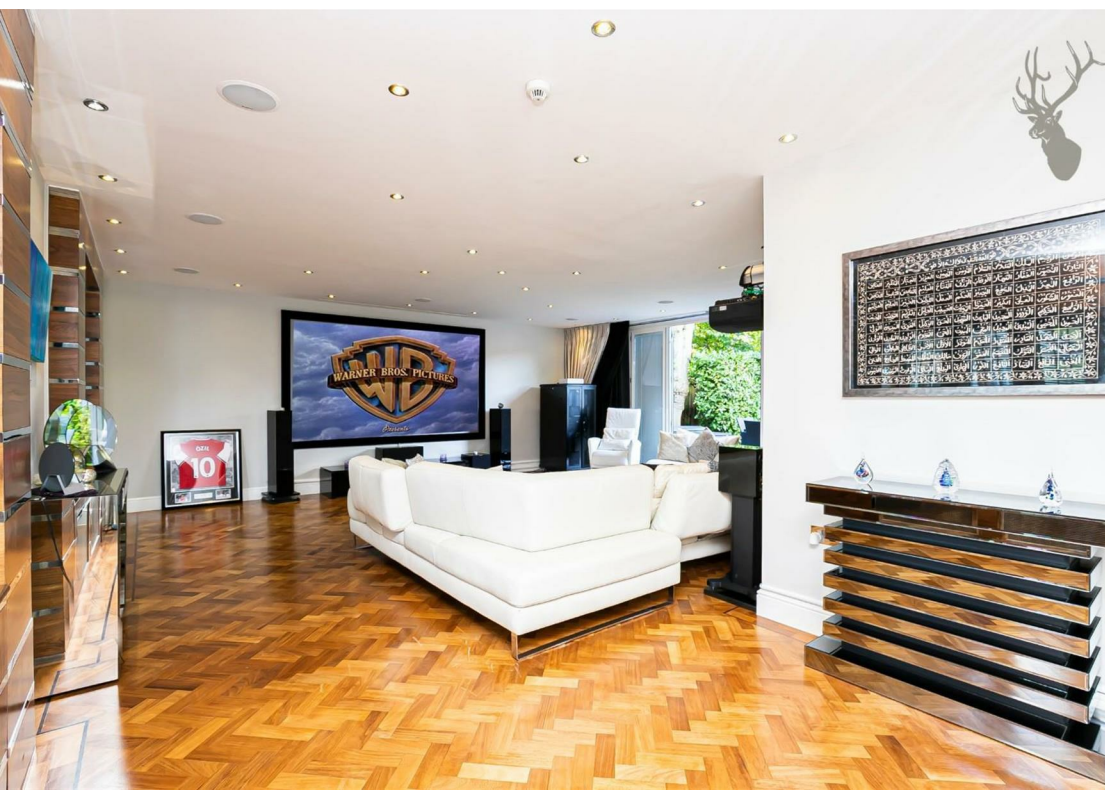
The family living space comprises of a snug reception room that sits in addition to the much larger formal reception with patio doors out and cinema screen. Running off from here, and hugely adding to the versatility, there is a third reception room that has a glazed partitioned office space that is ideal for a small homeworking team and offers a fifth bedroom above, giving separate guest or Au pair accommodation.

The kitchen/Dining room is fully integrated with high specification appliances and provides space for family dining and entertaining.

Upstairs, you will find a further four double bedrooms, two of which are well proportioned suites (one with dressing room) and each has en suite.

To the front of the property, there is gravel drive parking for several vehicles,





Bury Road

Ground Floor
Approx. 212 Sq. meters (2282 Sq. feet)



First Floor
Approx. 167 Sq. meters (1798 Sq. feet)



Total area (Including Eaves Storage) : approx. 383 Sq. meters (4123 Sq. feet)
Total area (Excluding Eaves Storage) : approx. 379 Sq. meters (4080 Sq. feet)
For illustration purposes only - not to scale
www.ipaplus.com

BUTLER & STAG

☎ 020 8504 9000

🏠 184 Queen's Road, Buckhurst Hill, IG9 5BD

✉ buckhursthill@butlerandstag.com

www.butlerandstag.uk

IMPORTANT NOTICE - These particulars have been prepared in good faith and they are not intended to constitute part of an offer or contract. We have not performed a structural survey on this property and the services, appliances and specific fittings have not been tested. All photographs, measurements, floor plans and distances referred to are given as a guide and should not be relied upon.